

Updating firmware using USB cable

FMxxxx functionality is always improving, new firmware versions are developed. Current module firmware version can be retrieved from Configurator.

Connect FMxxxx to PC with the USB cable. Launch “Firmware Updater”, select COM port to which device is connected, click connect, and when IMEI and Firmware version fields are filled, start the update. Device needs some time to send IMEI and Firmware version, so do not be afraid if IMEI will not show up immediately, disconnect and after 1-2 minutes try to connect again. When starting update after a few seconds device opens link with updater(**Figure 2**). With link open device downloads firmware and starts installing(**Figure 3**). Update process may take up to several minutes.

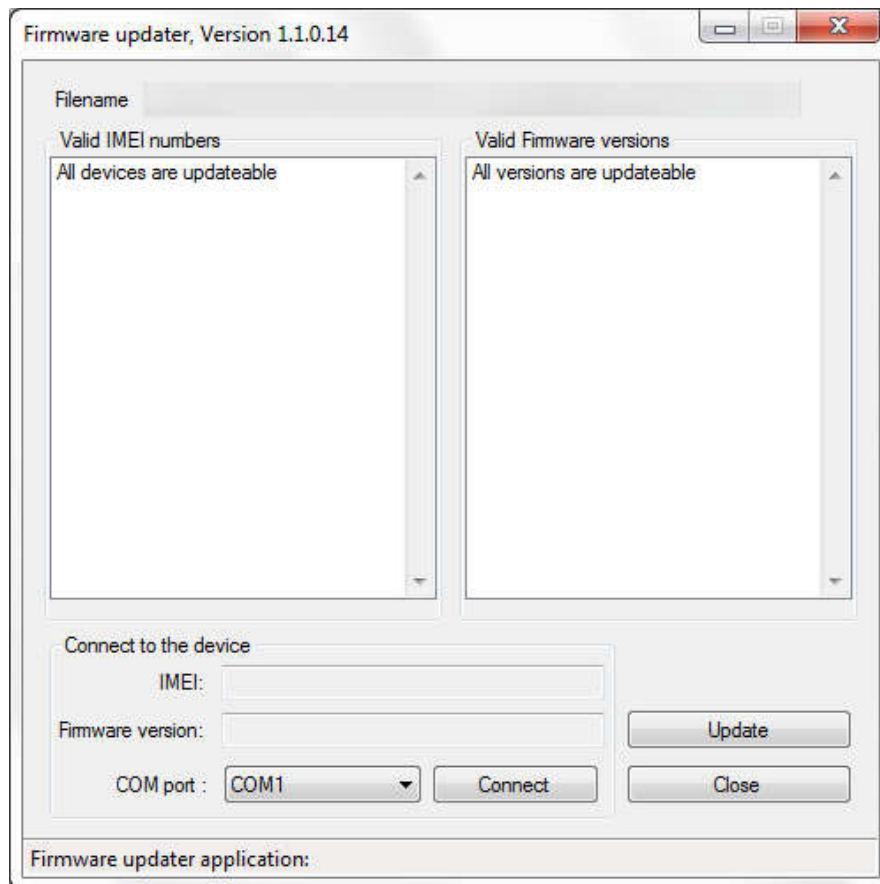


Figure 1. FMxxxx firmware updater screen

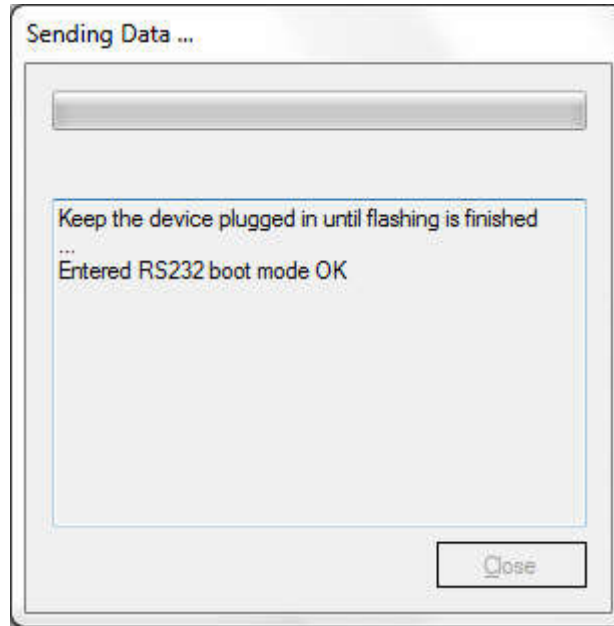


Figure 2. After a few seconds device opens link with updater

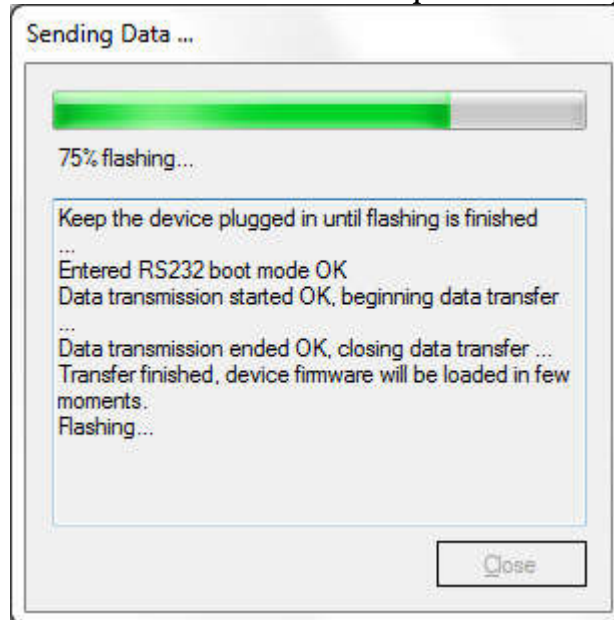


Figure 3. FMxxxx device downloads firmware data and starts installing.

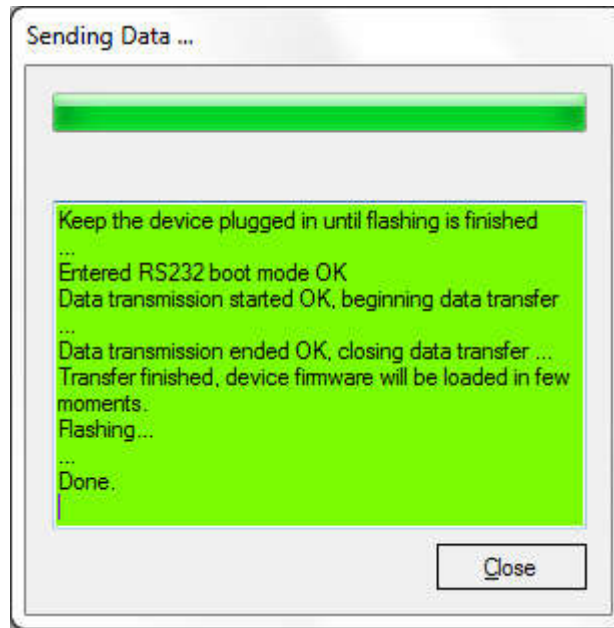


Figure 4. FMxxxx fimrwate updating succesfully complete

When you see a table like in Figure 4, it means that the firmware is flashed to FMxxxx successfully. You may now close the update window and start using your FMxxxx device.